

BOX SCORE: *** FINAL ***

Date: 03-26-88 Site: State Tourney, Frankfort

Attendance: 2,825

Team: Boone County

NO.	NAME	TOTAL FG		3-POINT		FT	FTA	REB			PF	TP	A	TO	BLK	S	MIN	
		FG	FGA	FG	FGA			O	D	T								
15	Nickerson, Jill	4	8	0	0	2	2	1	1	2	1	10	2	1	0	0	30	
21	Pennington, L.A.	4	11	0	0	0	2	1	0	1	4	8	4	1	0	1	31	
22	Davis, Amy	3	9	0	0	2	4	2	6	8	1	8	0	1	1	2	31	
30	Poland, Michelle	1	4	0	0	2	3	5	3	8	4	4	0	2	0	1	23	
44	Murphy, Sara	0	1	0	0	0	0	1	1	2	2	0	0	0	0	0	6	
10	Morrison, Julie	3	10	0	0	0	0	0	1	1	2	6	1	3	0	0	25	
35	Rich, Amy	1	1	0	0	0	0	0	0	0	5	2	0	1	1	0	9	
32	Schuster, Dawn	0	1	0	0	0	0	1	1	2	0	0	0	1	0	0	1	
42	Neely, Shawnta	0	0	0	0	0	0	0	1	1	0	0	0	0	0	0	1	
14	Lindon, Tina	0	1	0	0	0	0	1	0	1	0	0	0	0	0	0	1	
13	Fite, Leslie	0	1	0	1	0	0	0	0	0	0	0	0	1	0	0	1	
24	Perkins, Jenny	0	0	0	0	0	0	0	0	0	0	0	0	0	0	0	1	
TEAM																		
TOTALS		16	47	0	1	6	11	12	14	26	19	38	7	11	2	4	160	

Percentages:	Game	FG	16/47	34.0%	3-PT.	0/1	0.0%	FT	6/11	54.5%
Period 1	1	4/13	30.8%	0/0	0.0%	0/0	0.0%	0/0	0/0	0.0%
Period 2	2	5/9	55.6%	0/0	0.0%	4/4	100.0%	0/12	0.0%	
Period 3	3	2/12	16.7%	0/0	0.0%	0/12	0.0%	0/5	0.0%	
Period 4	4	5/13	38.5%	0/1	0.0%	2/5	40.0%			

Team: Oldham County

NO.	NAME	TOTAL FG		3-POINT		FT	FTA	REB			PF	TP	A	TO	BLK	S	MIN	
		FG	FGA	FG	FGA			O	D	T								
41	Harned, Terri	4	11	0	0	1	2	2	6	8	1	9	5	3	0	0	30	
44	Godman, Liz	8	12	0	0	6	10	4	6	10	1	22	2	0	0	0	31	
45	Edwards, Heather	4	7	0	0	2	2	2	4	6	3	10	0	1	1	1	27	
11	Prather, Charla	2	5	0	0	2	2	0	1	1	2	6	3	3	0	0	29	
31	Francis, Tina	0	0	0	0	0	0	0	1	1	0	0	1	2	0	1	12	
03	Lewis, Diane	0	1	0	0	0	0	0	1	1	2	0	4	0	0	0	11	
33	O'Bryan, Jenny	2	3	0	0	0	1	1	1	2	0	4	1	1	0	0	15	
23	Holloway, S.	0	0	0	0	0	1	0	0	0	0	0	0	0	0	0	1	
21	Martin, Bethany	0	0	0	0	0	1	0	0	0	0	0	0	0	0	0	1	
13	Roberts, Stacia	0	0	0	0	0	0	0	0	0	0	0	0	0	0	0	1	
25	Williams, Dana	0	0	0	0	0	0	0	0	0	0	0	0	0	0	0	1	
30	Henson, Bobbie	1	1	0	0	0	2	1	2	3	0	2	0	0	0	0	1	
TEAM																		
TOTALS		21	40	0	0	11	21	11	22	33	9	53	16	10	1	2	160	

Percentages:	Game	FG	21/40	52.5%	3-PT.	0/0	0.0%	FT	11/21	52.4%
Period 1	1	7/15	46.7%	0/0	0.0%	0/0	0.0%	0/0	0/0	0.0%
Period 2	2	6/13	46.2%	0/0	0.0%	1/3	33.3%	3/4	75.0%	
Period 3	3	3/5	60.0%	0/0	0.0%	0/0	0.0%	7/14	50.0%	
Period 4	4	5/7	71.4%	0/0	0.0%					

OFFICIALS: Dan Hatfield, Wayne Devine, Alt.-J. Baker
 Technicals:
 Oldham County Bench - 1;

SCORE BY PERIODS					
Boone County	8	14	4	12	= 38
Oldham County	14	13	9	17	= 53

Player	Team	Oldham County	Time	Score	Boone County	Player	Team
Lewis, Diane, Prather, Charla, Francis, Tina, Godman, Liz, Edwards, Heather					Nickerson, Jill, Pennington, L.A., Davis, Amy, Poland, Michelle, Murphy, Sara Ball to Lady Rebels		
			4 7:43		Sub In: Morrison, Julie Out: Murphy, Sara		
			4 7:30	36-28*	8 ft Right Side Turnaround by Davis, Amy	3-9	33.3% 12-35 34.2%
					Assist by Pennington, L.A.	3	4
			4 7:09	35-30*	14 ft Left Base Line Jump shot by Pennington, L.A.	4-8	50.0% 13-36 36.1%
					Assist by Nickerson, Jill	1	5
		REB: 23 A: 13 BLK: 1 TO: 8 PF: 2	4 6:44		REB: 18 A: 5 BLK: 2 TO: 5 PF: 4		
		S: 2 FT: 4-7 57.1% FG: 16-34 47.0%	No. 1 Oldham County	T I M E - O U T	S: 3 FT: 4-6 66.6% FG: 13-36 36.1%		
		Sub In: Harned, Terri Out: Francis, Tina	4 6:44				
2	3	Foul on Lewis, Diane	4 6:17				
		Sub In: O'Bryan, Jenny Out: Lewis, Diane	4 6:17				
1-2	50.0%	17-36 47.2%	4 5:49	*38-30			
2	14	Assist by Prather, Charla					
		Godman, Liz, 1 & Bonus missed 1st	4 5:11		Foul on Nickerson, Jill	1	5
3-6	50.0%	4-8 50.0%	4 5:11				
2-3	66.6%	18-37 48.6%	4 4:34	*40-30			
3	15	Assist by Prather, Charla					
2	4	Foul on Edwards, Heather	4 4:21				
		REB: 25 A: 15 BLK: 1 TO: 9 PF: 4	4 4:21		REB: 19 A: 5 BLK: 2 TO: 7 PF: 5		
		S: 2 FT: 4-8 50.0% FG: 18-37 48.6%	T I M E - O U T	Boone County No. 2	S: 3 FT: 4-6 66.6% FG: 13-37 35.1%		
			4 4:21		Davis, Amy, 2 Free Throws missed both	2-4	50.0% 4-8 50.0%
			4 4:11		Foul on Pennington, L.A.	3	6
2-2	100%	6-10 60.0%	4 4:10	*42-30			
4-7	57.1%	19-38 50.0%	4 3:53	*44-30			
2	16	Layup Off Fast Break by Edwards, Heather					
		Assist by Godman, Liz					
		Godman, Liz, 1 & Bonus made 1st missed 2nd	4 3:22		Foul on Poland, Michelle	4	7
4-8	50.0%	7-12 58.3%	4 3:21	*45-30			
			4 3:15	45-32*	2 ft Lane Driving by Morrison, Julie	3-10	30.0% 14-41 34.1%
		REB: 29 A: 16 BLK: 1 TO: 9 PF: 4	4 3:06		REB: 20 A: 5 BLK: 2 TO: 7 PF: 7		
		S: 2 FT: 7-12 58.3% FG: 19-38 50.0%	No. 2 Oldham County	T I M E - O U T	S: 3 FT: 4-8 50.0% FG: 14-41 34.1%		
		O'Bryan, Jenny, 1 & Bonus missed 1st	4 3:05		Foul on Morrison, Julie	2	8
0-1	00.0%	7-13 53.8%	4 3:05				
			4 2:55	45-34*	4 ft Lane Bank by Nickerson, Jill	4-8	50.0% 15-42 35.7%
					Assist by Pennington, L.A.	4	6
			4 2:35	45-36*	3 ft Lane Turnaround by Poland, Michelle	1-4	25.0% 16-43 37.2%
					Assist by Nickerson, Jill	2	7
3	5	Foul on Edwards, Heather	4 2:35				
			4 2:34	45-37*	Poland, Michelle, 1 Free Throw made	1-1	100% 5-9 55.5%
8-12	66.6%	20-39 51.2%	4 2:04	*47-37			
		REB: 29 A: 16 BLK: 1 TO: 10 PF: 5	4 1:55		REB: 21 A: 7 BLK: 2 TO: 8 PF: 8		
		S: 2 FT: 7-13 53.8% FG: 20-39 51.2%	T I M E - O U T	Boone County No. 3	S: 4 FT: 5-9 55.5% FG: 16-43 37.2%		
			4 1:42		Foul on Davis, Amy	1	9
2-2	100%	9-15 60.0%	4 1:42	*49-37			
1	6	Edwards, Heather, 2 Free Throws made both					
		Foul on Godman, Liz	4 1:30				
			4 1:30	49-38*	Poland, Michelle, 1 & Bonus made 1st missed 2nd	2-3	66.6% 6-11 54.5%
			4 1:08		Foul on Pennington, L.A.	4	10
6-10	60.0%	11-17 64.7%	4 1:08	*51-38			
			4 0:54		Sub In: Murphy, Sara Out: Morrison, Julie		
			4 0:54		Subs In: Rich, Amy, Schuster, Dawn, Neely, Shawnta, Lindon, Tina		
					Out: Nickerson, Jill, Pennington, L.A., Davis,		
					Amy, Poland, Michelle		
		Subs In: Francis, Tina, Holloway, S., Martin, Bethan,	4 0:54		Roberts, Stacia		
		Out: Prather, Charla, Harned, Terri, Godman, Liz,			Edwards, Heather		
		Sub In: Williams, Dana Out: Francis, Tina	4 0:53		Foul on Murphy, Sara	2	11
0-1	00.0%	11-18 61.1%	4 0:48				
		Holloway, S., 1 & Bonus missed 1st	4 0:48				
		Sub In: Henson, Bobbie Out: O'Bryan, Jenny	4 0:40		Sub In: Fite, Leslie Out: Murphy, Sara		
			4 0:40				
0-1	00.0%	11-19 57.8%	4 0:38		Foul on Rich, Amy	3	12
		Martin, Bethan, 1 & Bonus missed 1st	4 0:38				
0-1	00.0%	11-20 55.0%	4 0:34		Foul on Rich, Amy	4	13
		Henson, Bobbie, 1 & Bonus missed 1st	4 0:34				
			4 0:25		Foul on Rich, Amy	5	14
0-2	00.0%	11-21 52.3%	4 0:23		Sub In: Perkins, Jenny Out: Rich, Amy		
1-1	100%	21-40 52.5%	4 0:23				
		Henson, Bobbie, 1 & Bonus missed 1st					
		Shot by Henson, Bobbie	4 0:01	*53-38			

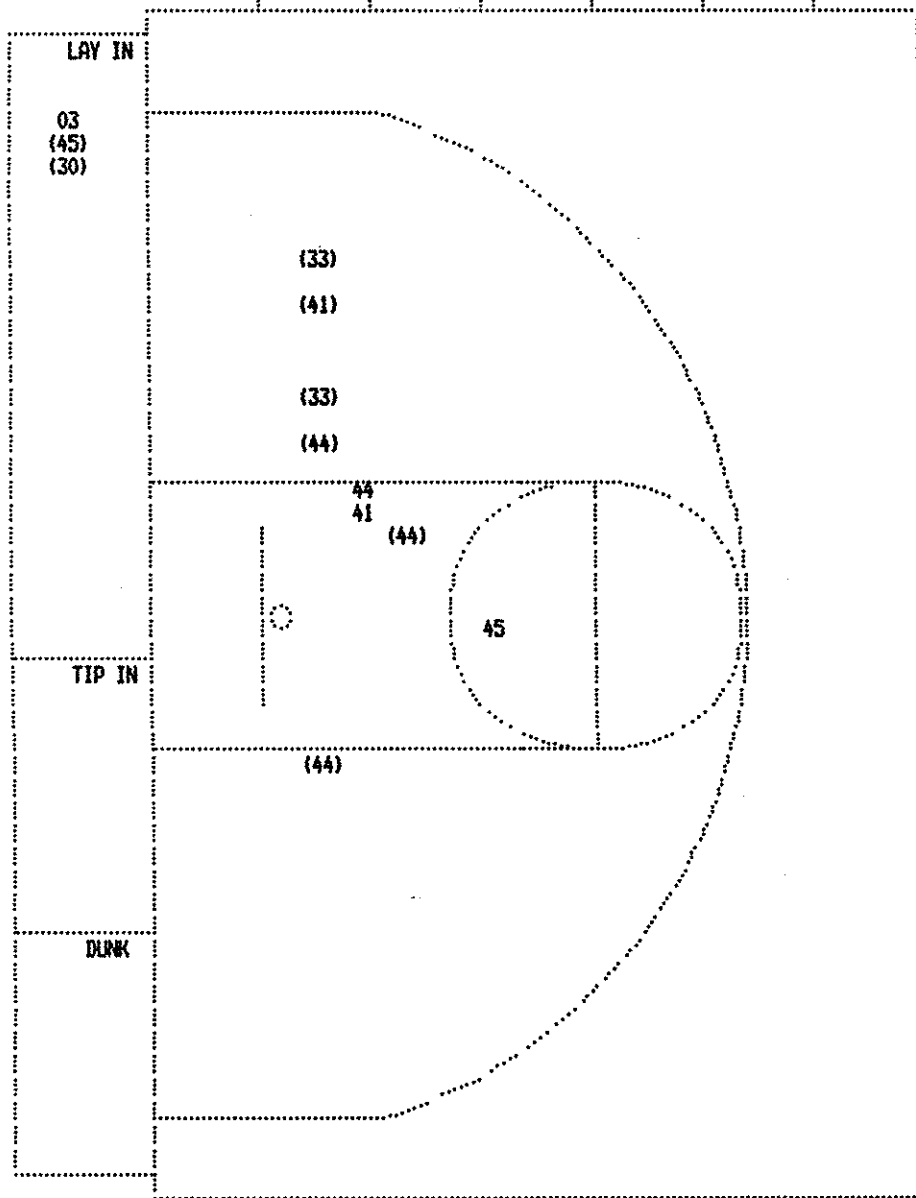
Boone County "Lady Rebels" vs Oldham County "Lady Colonels"
2nd Half Play by Play

Tip off at 11:30 a.m. on 03/26/88 at State Tourney, Frankfort
Produced by the K.H.S.A.A. Stat Crew with FINAL III™

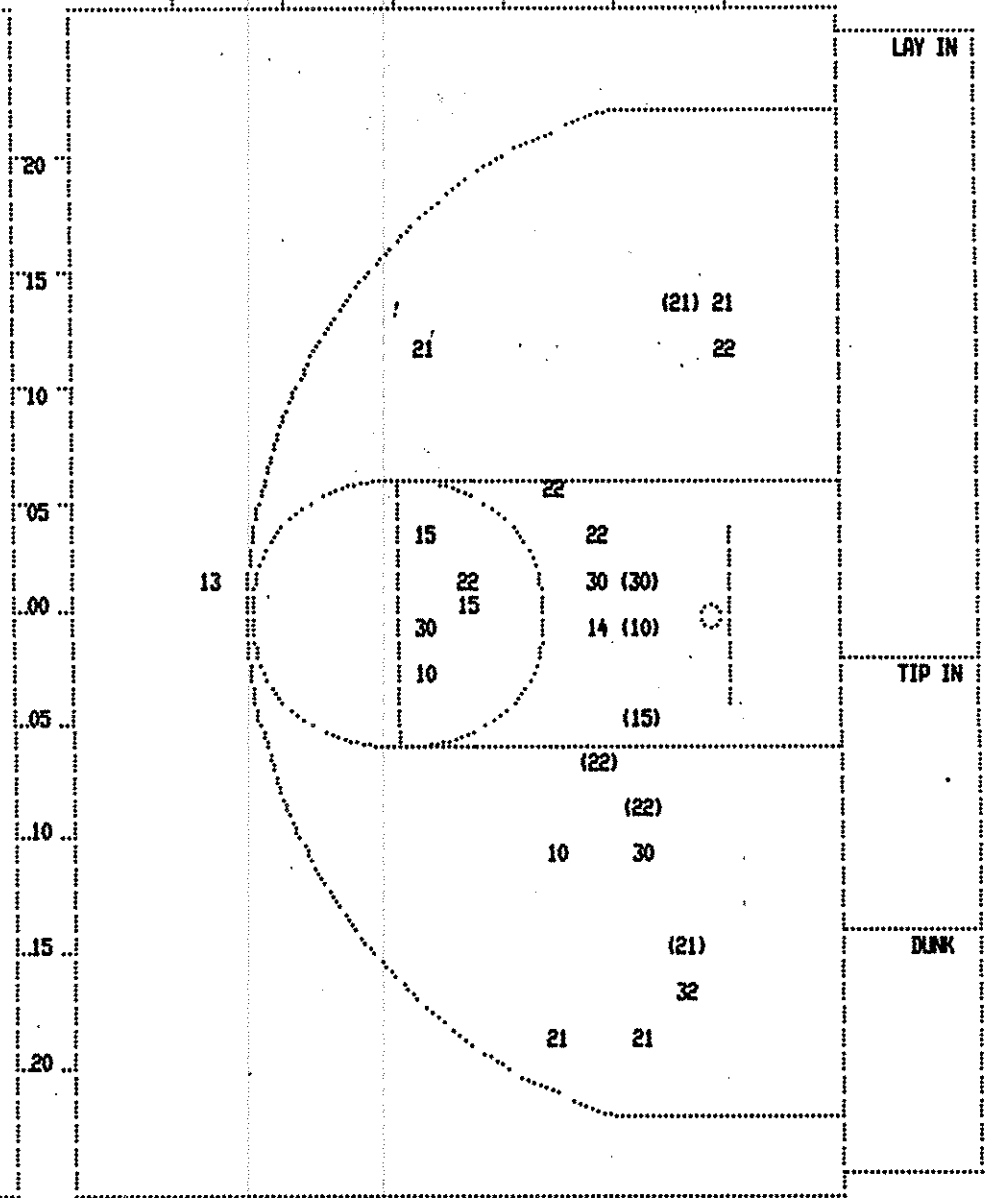
PAGE : 1

Player	Team	Oldham County	Time	Score	Boone County	Player	Team
Harned, Terri	Godman, Liz	Edwards, Heather, Prather, Charla, Francis, Tina			Nickerson, Jill, Pennington, L.A., Davis, Amy, Poland, Michelle, Murphy, Sara		
6-9	66.6%	14-29 48.2%	6 ft Lane Bank by Godman, Liz	3 7:47	*29-22		
4		11	Assist by Harned, Terri	3 6:40			
7-10	70.0%	15-30 50.0%	8 ft Right Base Line Turnaround by Godman, Liz	3 6:38	*31-22		
5		12	Assist by Harned, Terri	3 6:06			
2		1	Foul on Prather, Charla	3 5:51			
		1	Technical foul on Oldham County BENCH	3 5:51			
			Sub In: Lewis, Diane Out: Francis, Tina	3 5:40	31-24*	Pennington, L.A., 2 Free Throws missed both	0-2 00.0%
1-3	33.3%	2-5 40.0%	Godman, Liz, 2 Free Throws missed 1st made 2nd	3 5:40	7 ft Lane Turnaround by Davis, Amy		4-6 66.6%
3-5	60.0%	4-7 57.1%	Godman, Liz, 2 Free Throws made both	3 4:22	14 ft Right Base Line Jump shot by Pennington, L.A.	2-7 28.5%	10-28 35.7%
4-10	40.0%	16-32 50.0%	14 ft Right Base Line Jump shot by Harned, Terri		Assist by Morrison, Julie	3-6 50.0%	11-29 37.9%
4		13	Assist by Lewis, Diane	3 3:53	Foul on Poland, Michelle	1	3
				3 3:53		3	1
				3 3:53	*32-26		
				3 3:22	Foul on Pennington, L.A.	2	2
				3 3:22	*34-26		
				3 2:50	*36-26		
				3 2:20	Player Control Foul on Morrison, Julie	1	3
				3 2:20			
			REB: 21 A: 13 BLK: 1 TO: 6 PF: 1				
			S: 2 FT: 4-7 57.1% FG: 16-32 50.0%		Boone County No. 1		
						REB: 15 A: 3 BLK: 2 TO: 5 PF: 3	
						S: 2 FT: 4-6 66.6% FG: 11-31 35.4%	
				3 1:44	Sub In: Murphy, Sara Out: Morrison, Julie		
1		2	Foul on Harned, Terri	3 1:31			
				3 1:03	Foul on Murphy, Sara	1	4

SECOND HALF SHOT CHART Produced by the K.H.S.A.A. Stat Crew with FINAL III™



Oldham County				
Player		Player		Player
41 - Harned, Te	1 / 2 50.0%	33 - O'Bryan, J	2 / 2 100.0%	
44 - Godman, Li	3 / 4 75.0%			
45 - Edwards, He	1 / 2 50.0%			
03 - Lewis, Dia	0 / 1 0.0%			
30 - Henson, Bo	1 / 1 100.0%			
Layups	1-9 Ft	10-15 Ft	Over 15 Ft	3 Pointers Total
2 / 3	3 / 6	2 / 2	1 / 1	8 / 12
66.7%	50.0%	100.0%	100.0%	66.7%



Boone County				
Player		Player		Player
15 - Nickerson,	1 / 3 33.3%	13 - Fite, Lesl	0 / 1 0.0%	
21 - Pennington	2 / 6 33.3%	14 - Lindon, Ti	0 / 1 0.0%	
22 - Davis, Amy	2 / 6 33.3%	32 - Schuster,	0 / 1 0.0%	
30 - Poland, Mic	1 / 4 25.0%			
10 - Morrison,	1 / 3 33.3%			
Layups	1-9 Ft	10-15 Ft	Over 15 Ft	3 Pointers Total
5 / 9	2 / 11	0 / 4	0 / 1	7 / 25
55.6%	18.2%	0.0%	0.0%	28.0%

BOX SCORE: * OFFICIAL FIRST HALF * Date: 03-26-88 Site: State Tourney, Frankfort Attendance:

Team: Boone County

NO.	NAME	TOTAL FG		3-POINT		FT	FTA	REB			PF	TP	A	TO	BLK	S	MIN
		FG	FGA	FG	FGA			O	D	T							
15	Nickerson, Jill	3	5	0	0	2	2	1	1	2	0	8	0	0	0	0	16
21	Pennington, L.A.	2	5	0	0	0	0	1	0	1	1	4	2	0	0	0	16
22	Davis, Amy	1	3	0	0	2	2	1	4	5	0	4	0	0	1	1	16
30	Poland, Michelle	0	0	0	0	0	0	1	2	3	2	0	0	0	0	0	14
44	Murphy, Sara	0	1	0	0	0	0	0	0	0	0	0	0	0	0	0	11
10	Morrison, Julie	2	7	0	0	0	0	0	0	0	0	4	0	0	0	0	13
35	Rich, Amy	1	1	0	0	0	0	0	0	0	2	2	0	1	0	0	9
TEAM		9 / 22		0 / 0		4	4	4	7	11	5	22	2	1	2	1	95
Percentages:		HALF-----		FG		9/ 22	40.9%	3-PT.		0/ 0	0.0%	FT		4/ 4	100.0%		
		Period 1				4/ 13	30.8%			0/ 0	0.0%			0/ 0	0.0%		
		Period 2				5/ 9	55.6%			0/ 0	0.0%			4/ 4	100.0%		

Team: Oldham County

NO.	NAME	TOTAL FG		3-POINT		FT	FTA	REB			PF	TP	A	TO	BLK	S	MIN
		FG	FGA	FG	FGA			O	D	T							
41	Harned, Terri	3	9	0	0	1	2	1	2	3	0	7	3	1	0	0	16
44	Godman, Liz	5	8	0	0	0	1	2	4	6	0	10	1	0	0	0	16
45	Edwards, Heather	3	5	0	0	0	0	2	2	4	1	6	0	0	0	1	20
11	Prather, Charla	2	5	0	0	0	0	0	0	0	1	4	1	0	0	0	14
31	Francis, Tina	0	0	0	0	0	0	0	1	1	0	0	1	0	0	0	15
03	Lewis, Diane	0	0	0	0	0	0	0	1	1	1	0	3	0	0	0	5
33	O'Bryan, Jenny	0	1	0	0	0	0	1	0	1	0	0	1	1	0	0	9
TEAM		13 / 28		0 / 0		1	3	7	10	17	3	27	10	2	0	1	95
Percentages:		HALF-----		FG		13/ 28	46.4%	3-PT.		0/ 0	0.0%	FT		1/ 3	33.3%		
		Period 1				7/ 15	46.7%			0/ 0	0.0%			0/ 0	0.0%		
		Period 2				7/ 14	50.0%			0/ 0	0.0%			1/ 3	33.3%		

OFFICIALS: Dan Hatfield, Wayne Devine, Alt.-J. Baker
 Technicals: None

SCORE BY PERIODS			
Boone County	8	14	= 22
Oldham County	14	15	= 27

Produced by the K.H.S.A.A. Stat Crew with FINFL III™

Boone County "Lady Rebels" vs Oldham County "Lady Colonels"
1st Half Play by Play

Tip off at 11:30 a.m. on 03/26/88 at State Tourney, Frankfort
Produced by the K.H.S.A.A. Stat Crew with FINAL III**

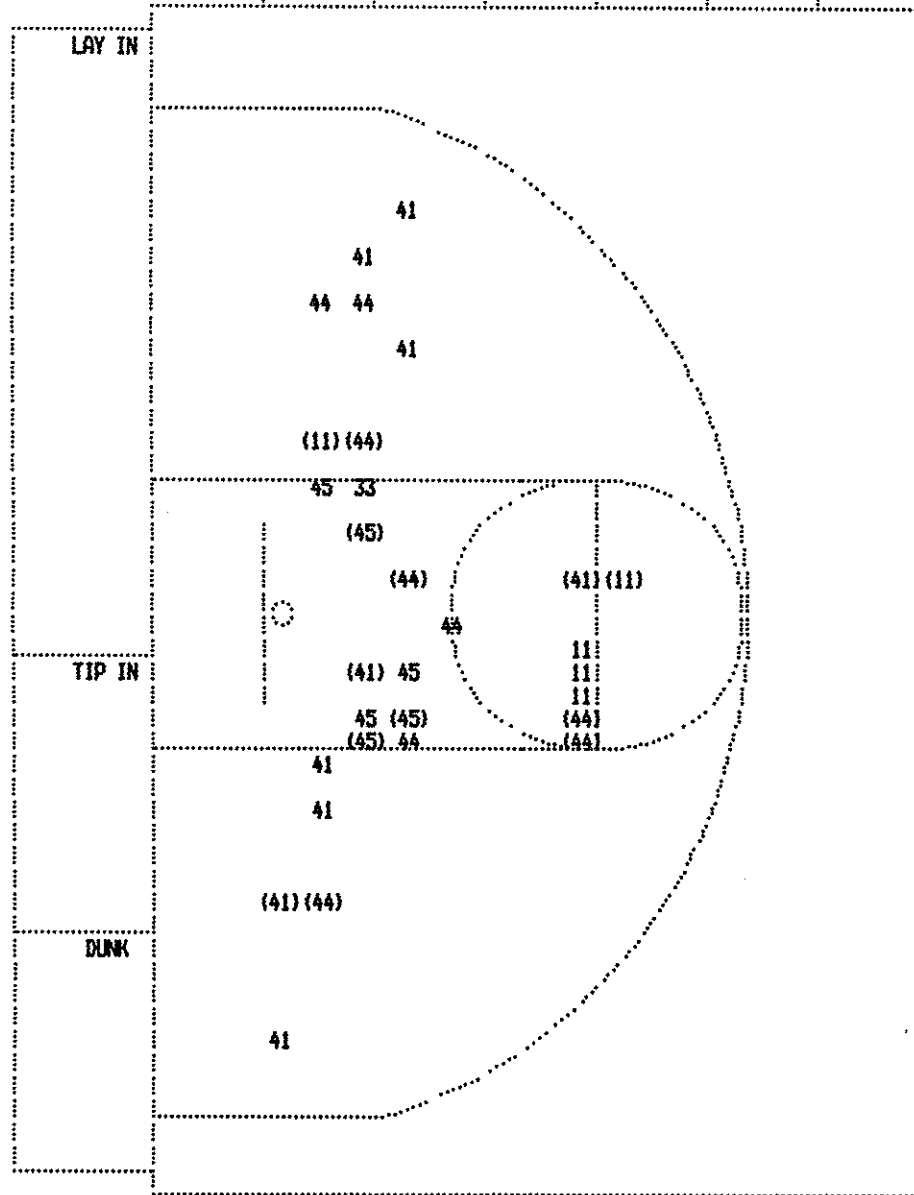
PAGE : 1

Player	Team	Oldham County
Harned, Terri	Godman, Liz	Edwards, Heather, Prather, Charla, Francis, Tina
1-2	50.0%	1-3 33.3%
1	1	4 ft Lane Bank by Edwards, Heather
		Assist by Francis, Tina
		Sub In: Lewis, Diane Out: Francis, Tina
1-2	50.0%	2-6 33.3%
		4 ft Lane Follow by Godman, Liz
2-3	66.6%	3-7 42.8%
1	2	13 ft Lane Jump shot by Godman, Liz
		Assist by Harned, Terri
3-4	75.0%	4-8 50.0%
2	3	13 ft Lane Jump shot by Godman, Liz
		Assist by Harned, Terri
2-3	66.6%	5-9 55.5%
1	4	6 ft Lane Jump shot by Edwards, Heather
		Assist by Godman, Liz
1-2	50.0%	6-10 60.0%
3	5	8 ft Right Base Line Driving by Prather, Charla
1	1	Assist by Harned, Terri
		Foul on Edwards, Heather
		Sub In: O'Bryan, Jenny Out: Prather, Charla
1-4	25.0%	7-14 50.0%
		3 ft Lane Follow by Harned, Terri

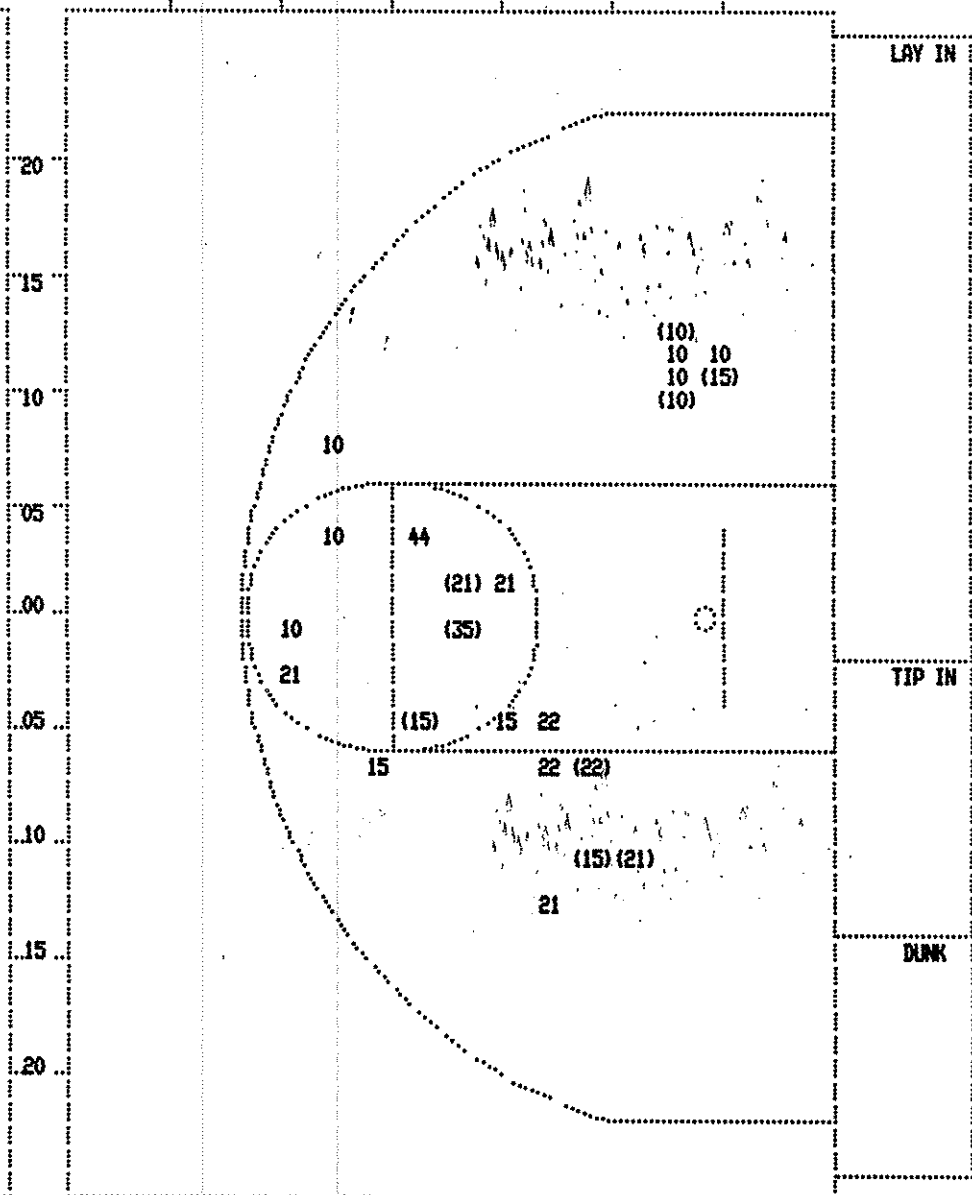
Time	Score	Boone County	Player	Team
		Nickerson, Jill, Pennington, L.A., Davis, Amy, Poland, Michelle, Murphy, Sara		
1 7:02	*2-0			
1 6:34	2-2*	13 ft Lane Jump shot by Nickerson, Jill	1-2	50.0%
1 5:23		Foul on Poland, Michelle	1	1
1 5:23		Sub In: Morrison, Julie Out: Murphy, Sara		
1 5:23				
1 4:53	*4-2			
1 4:51	4-4*	7 ft Lane Bank by Davis, Amy	1-2	50.0%
		Assist by Pennington, L.A.	1	1
1 4:15	*6-4			
1 3:22	*8-4			
1 3:08	8-6*	10 ft Lane Driving by Pennington, L.A.	1-2	50.0%
1 2:46	*10-6		3-9	33.3%
1 2:22		Foul on Poland, Michelle	2	2
1 2:05	*12-6			
1 1:34				
1 1:34		Sub In: Rich, Amy Out: Poland, Michelle		
1 1:34				
1 1:34	12-8*	10 ft Left Base Line Jump shot by Morrison, Julie	1-3	33.3%
1 0:38	*14-8		4-12	33.3%

SECOND QUARTER PLAY BY PLAY
NOT AVAILABLE

FIRST HALF SHOT CHART Produced by the K.H.S.A.A. Stat Crew with FINAL III™



Oldham County			
Player	Player	Player	Player
41 - Harned, Te	3 / 9	33.3%	
44 - Godman, Li	6 / 9	66.6%	
45 - Edwards, He	3 / 6	50.0%	
11 - Prather, C	2 / 5	40.0%	
33 - O'Bryan, J	0 / 1	0.0%	
Layups	1-9 Ft	10-15 Ft	Over 15 Ft 3 Pointers Total
	7 / 15	7 / 12	0 / 3 14 / 30
	46.7%	58.3%	0.0% 46.7%



Boone County			
Player	Player	Player	Player
15 - Nickerson,	3 / 5	60.0%	
21 - Pennington	2 / 5	40.0%	
22 - Davis, Amy	1 / 3	33.3%	
44 - Murphy, Sa	0 / 1	0.0%	
10 - Morrison,	2 / 8	25.0%	
35 - Rich, Amy	1 / 1	100.0%	
Layups	1-9 Ft	10-15 Ft	Over 15 Ft 3 Pointers Total
	1 / 5	8 / 14	0 / 4 9 / 23
	20.0%	57.1%	0.0% 39.1%